

LifeSmile[®]

IMPROVING ORAL HEALTH

Welcome!

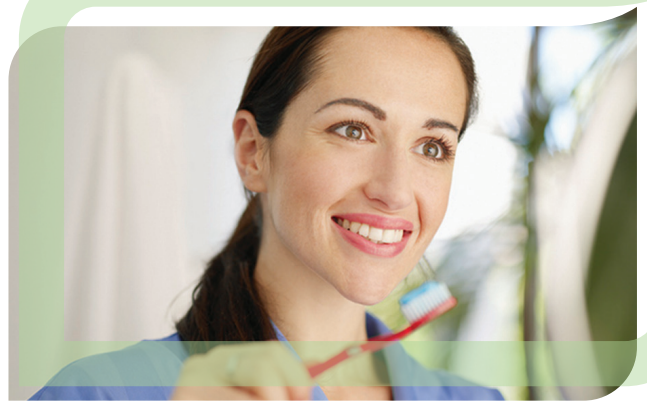
An employer's guide to
Delta Dental of Virginia's
LifeSmile program

Oral health is important to overall health

Having a healthy mouth is more than having an attractive smile. Scientific research continues to reveal how important oral health is to our overall health. Being free from dental disease can improve the health of your heart and circulatory system. It can also help prevent more severe side effects from diabetes and even help ensure that babies are born healthy.

Why LifeSmile?

LifeSmile lets you pick the appropriate level of engagement in oral wellness. Employees sign on to your company's LifeSmile web page to take the oral health assessment. We can then report, not only who took the assessment but we can also give you an oral health snapshot of your employee population and help design the best benefit plan for you.



THAT'S LifeSmile

**IMPROVED HEALTH OUTCOMES CAN
SAVE MONEY, CREATE A MORE
PRODUCTIVE WORKFORCE AND
FOSTER HEALTHIER BEHAVIORS.**

Delta Dental of Virginia provides access to the nation's largest provider network, award-winning customer service and 24/7 online access to benefits information and more.

DELTA DENTAL

Home | Estimate My Dental Scores | Find a Delta Dental Provider | Oral Health Library

Report Number: E148WDD **Print Section** **Print**

Summary
The following is a report summary

What does the Risk Score mean? Your **Risk Score** describes the chance your health will get worse without good home and professional care.

What does the Disease Score mean? Your **Disease Score** describes how much care is needed to get you as healthy as you can be or to prevent another episode of disease.

Gum Disease Risk: 4
Your estimated gum disease risk is 4, indicating high risk.

Gum Disease Score: 3
Your estimated gum disease score is 3, indicating mild periodontitis.

Tooth Risk: 2
Your estimated tooth risk is 2, indicating low risk.

Tooth Needs: 2
Your estimated tooth needs is 2, indicating low restorative needs.

Oral Cancer Risk: 1
Your estimated oral cancer risk is 1, indicating very low risk.

LifeSmile Score Oral Health Assessment



This self-administered oral health risk assessment uses questions about oral habits like brushing and flossing, the frequency of dental visits and other oral behaviors. The tool combines this data with oral treatment history and the presence of any chronic medical conditions and calculates a numeric score. The score reflects a person's current oral health status and the risk for future disease.

Members who have completed the assessment then receive a targeted message pertaining to their individual score. This begins the process of connecting oral and overall health in the minds of employees and their families and can begin a dialogue between patients and their dentist.

As an employer, you can then focus your wellness dollars to have the greatest impact on improving health outcomes while helping to reduce your claims cost.

DELTA DENTAL LifeSmile®

LifeSmile Self-Assessment - Overview (124 Members)
Report Period: January 1, 2019 - July 1, 2019

Risk Score	Caries Risk (tooth decay)		Perio Risk (gum disease)		Oral Cancer Risk	
	Member Count	% of Total Members	Member Count	% of Total Members	Member Count	% of Total Members
1	10	8%	90	73%	112	90%
2	58	47%	15	12%	7	6%
3	45	36%	4	3%	4	3%
4	11	9%	8	6%	0	0%
5	0	0%	7	6%	1	1%

LifeSmile scores are based on member responses to an online questionnaire relating to their oral health. Below are definitions of each risk category.

Risk Category Definitions

1 (very low risk) and 2 (low risk): Member is in a state of good oral health primarily receiving preventive services. No caries, restorative needs or periodontitis, or teeth are in a good state of repair.

3 (moderate risk): Member is at moderate risk and has received both preventive and restorative services.

4 (high risk) and 5 (very high risk): Member is in a poor state of oral health, receiving primarily restorative services and is at high-risk for caries, periodontal disease and/or oral cancer.

Group Wellness Overview

The LifeSmile Group Wellness Overview begins with a custom, secure website through which members can access the online risk assessment. The report then analyzes data collected from members of your group's population who have completed a simple online oral health risk assessment.

The website and member messaging is available to all groups. Wellness Overview reports are available to groups with at least 10% member participation, which is required to provide statistically-valid results.

Contact your Delta Dental account manager to learn more.